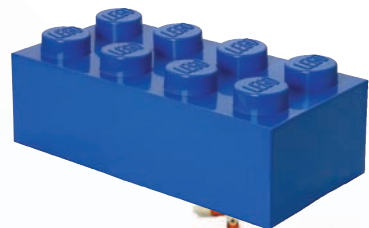


LIMITED EDITIONS
Collect all 15 sets!

ReefScape

model series by TMC



Tropical Marine Centre
in association with

Bright Bricks
Building imagination with LEGO bricks



Certified Professional
Models designed by Duncan Titmarsh



Share your own ReefScape with the world!
Post a picture of your finished ReefScape model on Instagram with the hashtag #TMCReefScape

www.reefscape.co.uk


Blue Spot Stingray (*Taeniura lymna*)



Location	Care	Diet	Reef Safe?
Lagoons, coastal and outer reef slopes in the Indo-Asian Pacific Ocean	● Keep singly		X CAUTION • Tail spine is venomous

Fun Fact
The Blue Spot Stingray hunts by sensing electric fields given off by other aquatic animals. This is called "electroreception"

Humbug Damsel (*Dascyllus melanurus*)



Location	Care	Diet	Reef Safe?
In-shore and lagoon reefs of the Asian Pacific Ocean	● Keep singly or in groups of 5+		✓ CAUTION • May be aggressive

Fun Fact
It looks like your grandad's favourite boiled sweet!

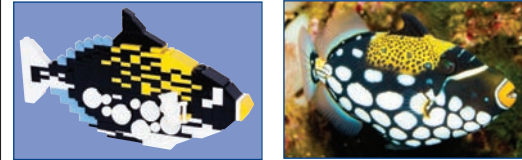
Yellow Tang (*Zebrasoma flavescens*)



Location	Care	Diet	Reef Safe?
Coral areas and lagoons in the Northwest – Central Pacific Ocean	● Keep singly or in schooling groups		✓ CAUTION • May nip at hard/soft corals

Fun Fact
Yellow tangs are the best at playing 'follow the leader'!

Clown Triggerfish (*Balistoides conspicillum*)



Location	Care	Diet	Reef Safe?
Outer coral reef slopes of the Indo-West Pacific Ocean	●/● Keep singly		X CAUTION • Very aggressive • Can be destructive

Fun Fact
Clown Triggerfish get their name because of their unusual and whacky colouring!

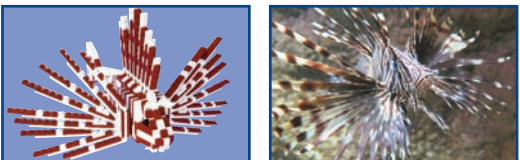
Juvenile Clarion Angel (*Holacanthus clarionensis*)



Location	Care	Diet	Reef Safe?
Wild Clarion Angels are only found around the Revillagigedo Islands (Mexico)	● Keep singly		X CAUTION • Will eat coral polyps and other sessile inverts

Fun Fact
Tropical Marine Centre sold the very first tank bred Clarion Angel in 2013

Lionfish (*Pterois volitans*)



Location	Care	Diet	Reef Safe?
Native to the East Indian - Pacific Ocean. Now invasive in the Caribbean Sea	●/● Keep singly		✓ CAUTION • Spines are venomous • Will eat other fish

Fun Fact
Lionfish have no natural predators. When on a hunt, they corner their prey using their large fins and then suck the prey into their mouths

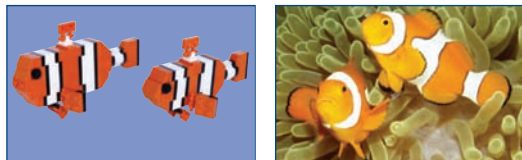
Domino Damsel (*Dascyllus trimaculatus*)



Location	Care	Diet	Reef Safe?
Coral and rocky reefs of the Indo-Pacific Ocean	● Keep singly or in groups of 5+		✓ CAUTION • May be aggressive

Fun Fact
Newly-hatched Domino Damsel larvae are only 2.5mm long

Clownfish (*Amphiprion ocellaris*)



Location	Care	Diet	Reef Safe?
Shoreline reefs of East Indian - Asian Pacific Ocean. Most clownfish in the aquarium trade are now captive bred	● Keep in pairs, ideally with an anemone		✓ CAUTION • May be aggressive

Fun Fact
All clownfish are born male and are able to swim freely between the poisonous tentacles of an anemone without being stung

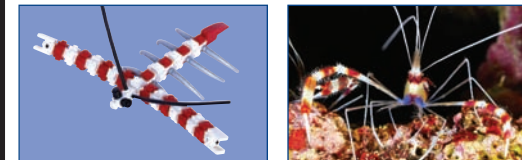
Small Emperor Angelfish (*Pomacanthus imperator*)



Location	Care	Diet	Reef Safe?
Coral reefs in the Indian - Pacific Ocean	●/● Keep singly		X CAUTION • Will eat coral polyps and other sessile inverts

Fun Fact
Emperor Angelfish make a loud grunting sound when startled!


Boxing Shrimp (*Stenopus hispidus*)



Location	Care	Diet	Reef Safe?
Crooks and crevices of the Tropical Seas	● Best kept in pairs		✓ CAUTION • May attack other shrimps and preys on worms

Fun Fact
If a boxing shrimp loses an arm, it regenerates a new one!

Large Emperor Angelfish (*Pomacanthus imperator*)



Location	Care	Diet	Reef Safe?
Coral reefs in the Indian - Pacific Ocean	●/● Keep singly		X CAUTION • Will eat coral polyps and other sessile inverts

Fun Fact
The largest Emperor Angelfish scientifically measured was 40cm long!


Seahorse & Pipefish (*Hippocampus* & *Syngnathidae*)



Location	Care	Diet	Reef Safe?
Seahorse: Bred in captivity for aquarium trade Pipefish: Caves or ledges of coastal lagoons and outer reefs of the Indo-Pacific Ocean	● Keep in pairs/grps with ornaments to hold onto ● Keep in pairs		✓ CAUTION • Keep seahorses in a seahorse/pipefish-only tank • Keep pipefish with other peaceful fish and inverts

Fun Fact
Male Seahorses look after the eggs in their pouch until they hatch. Banded pipefish can swim upside down!

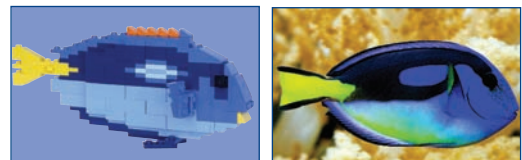
Black & White Bannerfish (*Heniochus acuminatus*)



Location	Care	Diet	Reef Safe?
Coral and rocky reefs of the Indo-Pacific Ocean	●/● Keep singly or in groups of 3+		X CAUTION • Will eat coral polyps and other sessile inverts

Fun Fact
The large banner-like dorsal fin looks like the sail of a ship

Regal Tang (*Paracanthurus hepatus*)



Location	Care	Diet	Reef Safe?
Outer reefs of the Indo-Pacific Ocean	●/● Keep singly or in schooling groups		✓ CAUTION • May be aggressive

Fun Fact
This fish is an A-list celebrity in a popular Pixar film!

Regal Angelfish (*Pygoplites diacanthus*)



Location	Care	Diet	Reef Safe?
Lagoons and outer coral reefs of the Indo-Pacific Ocean	●/● Keep singly or in pairs		X CAUTION • Will eat coral polyps and other sessile inverts

Fun Fact
Regal Angelfish have slimy skin so they can swim faster through the water