

the choice of the water gardener
Aquagarden
Essential

PondVac

Instruction Manual

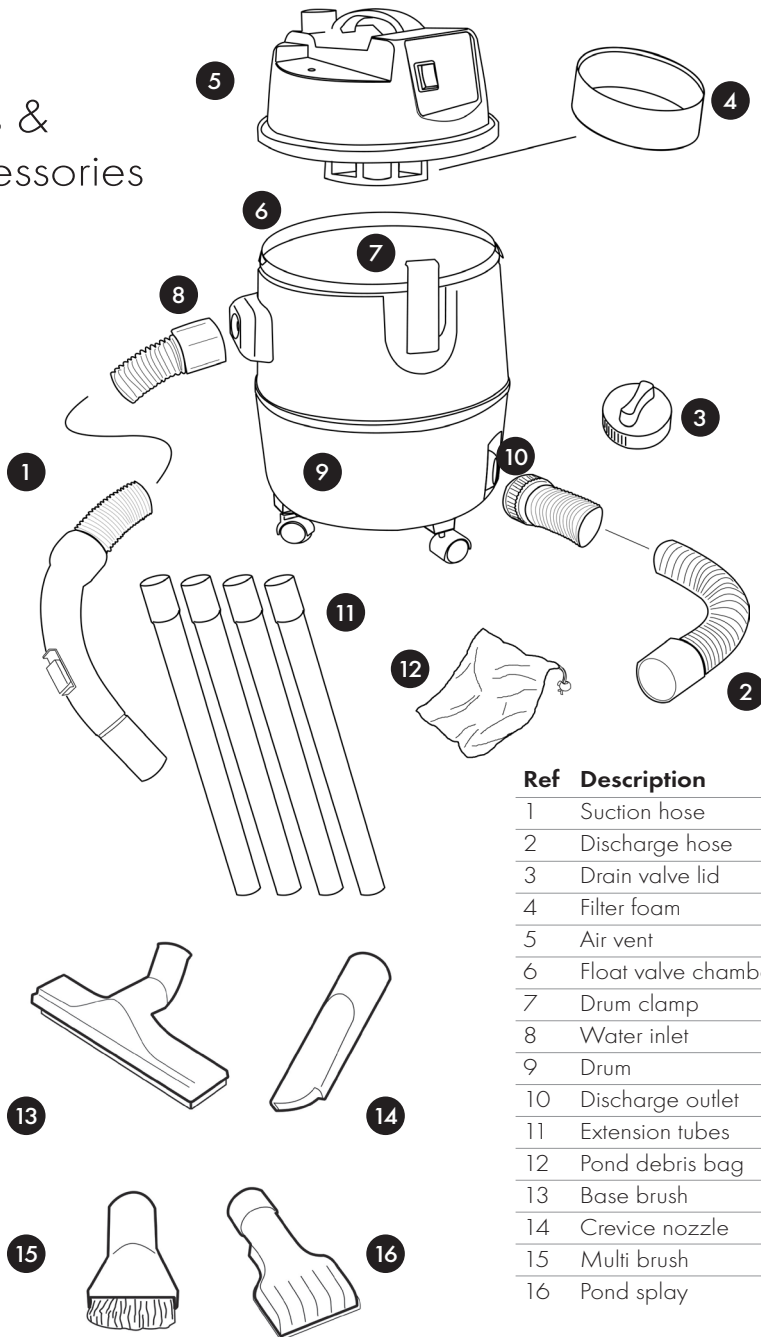


Powerful 1400w motor • 30 litre Drum capacity
2.0m discharge hose • 4.0m suction hose

**ALL POND
SIZES**

the choice of the water gardener
Aquagarden
Essential

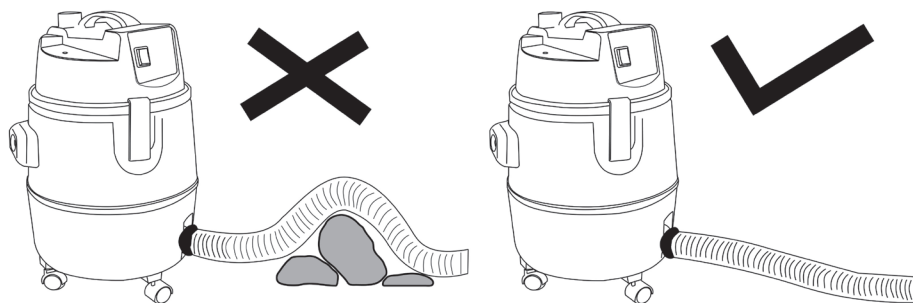
Parts & Accessories



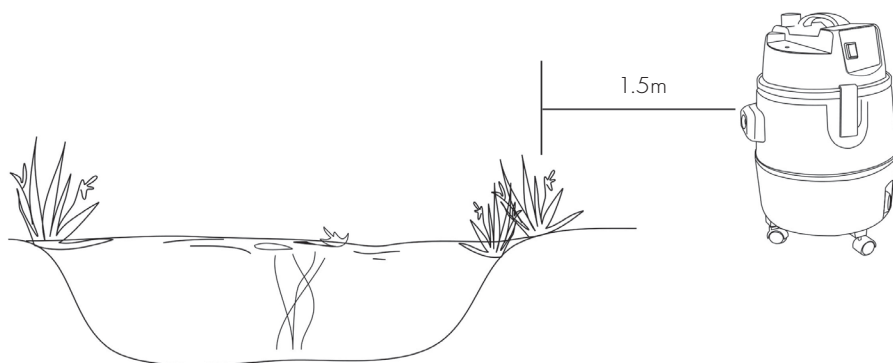
Ref Description

1	Suction hose
2	Discharge hose
3	Drain valve lid
4	Filter foam
5	Air vent
6	Float valve chamber
7	Drum clamp
8	Water inlet
9	Drum
10	Discharge outlet
11	Extension tubes
12	Pond debris bag
13	Base brush
14	Crevice nozzle
15	Multi brush
16	Pond splay

Safety Operation



1. Keep drainage hose flat and avoid kinks and obstacles

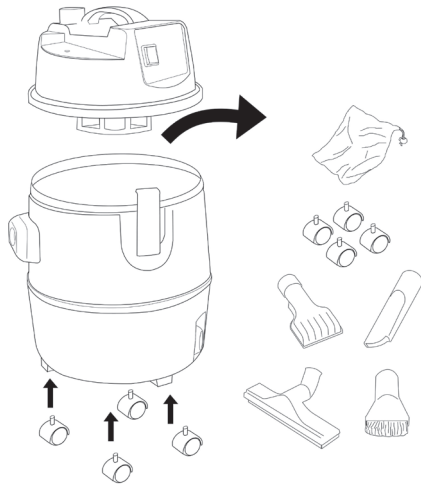


2. Ensure vac is a minimum of 1.5m from the pond edge at all times.

Technical specifications:

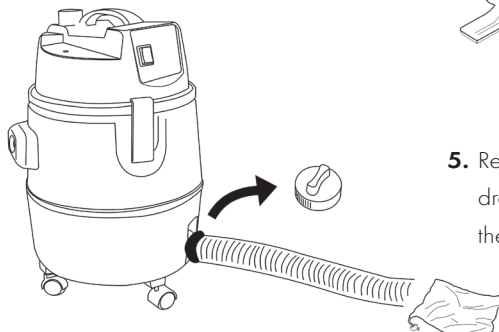
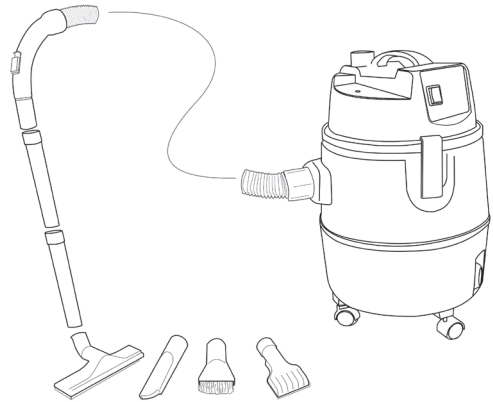
Voltage 230v
Hertz 50Hz
Watts 1400w
Safety rating CE IPX4
Cable length 4m
Maximum depth 2m

Correct Installation



1. Unpack contents from the pond vac drum.
2. Install wheels to pond vac base.

3. Insert suction hose to drum water inlet.
4. Attach extension tubes and desired head attachment.



5. Remove drainage valve lid and attach drainage hose, fit pond debris bag over the end of the discharge hose.

Electrical Installation

The Power supply must meet the specifications on the product.

- Extension cables and powers supplies must be suitable for outdoor use.
- Always consult a qualified electrician if you are unsure.
- The electrical cable is permanently connected and sealed within the motor body.
 - If the supply cable is damaged the pond vac must not be used.
 - Minimum safety distance of 1.5m from pond edge must be adhered to.



Water garden Circuit Breaker

- We recommend use of a Blagdon Powersafe water garden circuit breaker code 1040181, ask retailer for details.
- **An RCD is a legal requirement for outdoor power supplies.**



**WARNING: NOT TO BE USED
BY CHILDREN**



**WARNING: POND VAC MUST
BE EARTHED**

- A Residual Current Device (RCD), also know as the Residual Current Circuit Breaker (RCCB), with a tripping current not exceeding 30mA must be installed in the supply circuit.
- A means of disconnection from the supply having a contact separation of at least 3mm in all poles must be incorporated in the fixed wiring.

Intended Use

Aqua garden Essential Pond Vac, may be used for the following applications:

- Removal of pond sludge and waste.

Do not:

- Operate or leave in the rain.
- Use the unit to collect hot ash, toxic, flammable and volatile substances
- Operate the Vac with persons in the water.
- Carry or pull the Vac by its electrical cable.
- Modify or tamper with The Vac or its housing.

Environment friendly disposal



You can help the environment. Please remember to respect the local regulations by handling in non-working electrical equipment to an appropriate waste disposal centre.

How to use your Pond Vac

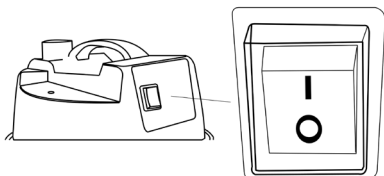
As a Pond sludge removal unit.

- Never operate without filter foam.
- Place the Vac at the minimum distance of 1.5m from the pond edge.
- Ensure a safe and stable position.
- Remove drain valve lid.
- Plug the discharge hose into the drain valve outlet of the vac drum.
- Make sure drainage valve outlet is above the water level.
- Ensure the discharge hose sits flat and avoid kinks.
- Attach suction extension tubes and desired accessory.
- Switch the pond vacuum on, please note there will be a delay in power while the vacuum cycles through its 60 second cycle.
- Use vac to remove debris
- It will vacuum until the unit is full and then stops while it automatically drains through the discharge hose and then restarts (auto cycle)

Switch mode

Please note that there will be a delay in power supply while the vacuum cycles through its 60 second auto cycle.

30 seconds on vacuuming and 30 seconds off vacuuming while it drains is normal operation.



Hints and tips

- When vacuuming your pond try to keep water disturbance to a minimum to maintain pond visibility.
- Gently agitate the pond waste and run the vacuum across the areas as required.
- Remove larger waste pockets at the bottom of your pond first and allow finer particles to settle before vacuuming again.
- Maintain any pond filtration after vacuuming to allow for any disturbed debris to be collected by the filter.

Maintenance and Cleaning

- Switch the product to the off position and unplug the vac from the power supply.
- Remove all hoses and attachments, check for blockages and rinse through.
- Remove pond debris bag and clean.
- Undo clamps and rinse drum out.
- Remove filter foam, squeeze and rinse under tap.
- Check float valve and remove any debris.

Storage

- Ensure Pond Vac is clean and all waste is removed.
- Store in a cool dry room away from children.

Troubleshooting

PROBLEM	CAUSE	REMEDY
Drum does not empty	The drain hose is kinked or It does not have enough incline	Reposition hose
	Drain hose or valve blocked	Remove dirt and blockage from hose and valve
Low suction capacity	The drum is full	Empty the drum
	Foam filter blocked with dirt	Clean filter foam
	Hoses blocked with dirt	Check hoses for blockages
	Jammed outlet valve on drainage hose	Check valve for blockages
	Suction depth greater than 2m	Reduce the suction depth
	No power supply	Check mains power
Unit does not suck	Running on auto cycle	Wait for cycle to complete
Developed noise and heavy vibration	Drum is full	Empty the drum
Vapour escapes from air vent	In cold weather, condensation can build in the unit	Normal evaporation, no remedy needed

Guarantee

This product is guaranteed against defects in material and workmanship for 1 year From the date of purchase, under normal usage. The guarantee DOES NOT APPLY in case of improper use, negligence, lack of Maintenance or accidental damage to the Vacuum or wearable parts – sealing rings and rubber valves. If the vacuum fails due to a manufacturing fault within this period it will be either repaired or replaced free of charge. Liability is limited to replacement of the faulty product only, no other costs will be reimbursed.

This guarantee is not transferable and does not effect your statutory rights. This guarantee does not confer any rights other than those expressly set above.

Consumer Advice

Interpet Consumer Advice department
Vincent Lane, Dorking, Surrey RH4 3YX

Email: customercare@interpet.co.uk



the choice of the water gardener
Aquagarden
Essential

Interpet, Vincent Lane, Dorking,
Surrey RH4 3YX England